

SolarthermPlus® Doorset specifications - U-Values down to 0.8W/m²K

Door construction	Grained GRP moulded skins in various colours (outer skin) Inner skin – white grain PVC 100% CFC free polyurethane thermally insulated inner core
Locking mechanism	Roto MV D500 Tested to PAS 23 & PAS 24 weather performance & security standards Secure By Design approved
PVC outerframe	Fully reinforced dedicated 70mm composite door outerframe specifically designed for 68mm door sash.
Glazing cassette	Accreditation : to Secure By Design standards PAS 24 / SBD
Reinforcement	Galvanised Steel
Furniture	Fully suited – salt spray tested
Handle type	Level / lever or Lever/pad operation
Hinge type	SFS Dynamique adjustable flag hinges (white) – 3 per door
Hardware performance	BSI kitemark PAS 23 PAS 24
Weather rating	PAS 23
Security rating	PAS 24
Glass	26mm toughened sealed units as standard. All units higher than 0.9W/m ² K are Argon filled. Triple glazed units available also on certain 0.8W/m ² K solutions
Decorative glass	12 options with 6 obscurity levels
Cylinder	Euro cylinder – 6 pin anti drill to BS EN 1303 / 2005
UV stability	Guaranteed for 10 years

Options

Thresholds	Low aluminium or Part M compliant in Matt Silver or Gold or Low PVC-U
Furniture	Letterplate, knocker, spyhole, spyhole and knocker, door chain, numerals in gold or chrome effect finish

Dimensions - Contact us for dimensions outwith the sizes shown below

Standard Outerframe width:	Min: 855mm x Max: 976mm
Standard Outerframe height:	Min: 1913mm x Max: 2143mm

We reserve the right to alter specifications inline with our policy of continual product improvement Highly Certified and Sustainable, you are guaranteed products and service second to none.



SolarthermPlus®
COMPOSITE DOORSETS
U-Values down to 0.8W/m²K



Scan or Click  for Sidey Factory Video 

 Subscribe to the Sidey Channel  Like Sidey  Follow @sideyLtd

UK Manufacturers | 0800 234 400 | tncinfo@sidey.co.uk | www.sidey.co.uk



Scan/Click for more info on Sidey

Sidey SolarthermPlus® Composite Doorset Range offering U-Values as low as 0.8W/m²K



Features

- Individually made to measure
- Full steel reinforcement
- No cutting down to size
- No warping and twisting

Door frame

- Steel reinforced 70mm PVC-U profile extruded to BS7413
- High impact resistance
- Timber free

Thermoset GRP skin

- Pre-formed door skins give a high grain definition and 'sharp' natural wood grain embossed effect
- Strong colourfastness - UV tested to withstand strong sunlight means less prone to fading
- Low maintenance
- Authentic look, feel and appeal of a real wood grain door

Special 'double rebate' performance

- Easier installation and on-site adjustment
- Greater tolerance in movement between door leaf and frame
- Double seal to give increased weather performance
- Reduces water ingress by up to 200 times that of a standard flush fit door
- Improved acoustic insulation
- 6000 & 800000 door styles conforms to CSH code level 6 - Zero Carbon - 0.8W/m²K

68mm thickness

- A thicker 68mm door outperforms thinner 44mm doors on thermal performance
- High density CFC free environmentally friendly polyurethane foam inner core with global warming potential of only 1 and an ozone depletion of zero
- Excellent thermal and acoustic properties
- Energy Efficient
- High impact resistance against damage
- Warp free
- Weather resistant

Various styles to suit your needs - including Utility Doors which are suitable for Sheds, Store Rooms, Meter Cupboards and Side Passageways, along with Top Lights and Side Lights.

Specification, styles, colours etc. are subject to change inline with our policy of continual product improvement.

Please contact us for more details on all our low U-Value Products

Email: tncinfo@sidey.co.uk Call: 01738 783 778

Secured by Design



Police Preferred Specification

Styles

Traditional Range



Contemporary Range

The 6000CSH style is suitable for Code level 6 - Zero Carbon (U-Value - 0.8W/m²K)

The 800000 style is suitable for Code level 6 - Zero Carbon (U-Value - 0.8W/m²K)

All styles meet Code for Sustainable Homes

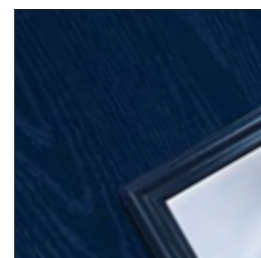


Colours

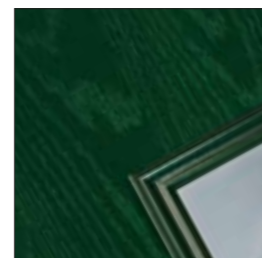
Our GRP 'through colour' doors are available in a choice of 8 colour finishes.



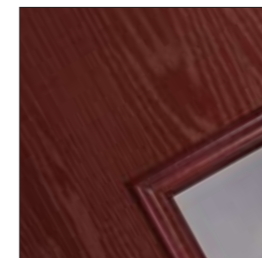
White RAL9016



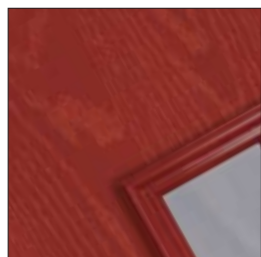
Blue RAL5011



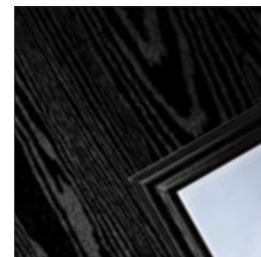
Green RAL6009



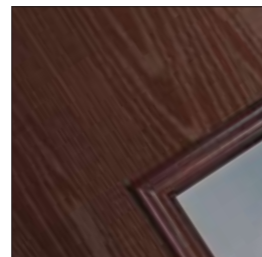
Burgundy RAL3005



Red RAL3011



Black RAL8022



Rosewood



Light Oak

Glass

Choose from a wide selection of decorative styles, patterns, colours and obscurity levels depending on door style.

Decorative glass styles



Agate

Californian*

German

Mediterranean

Retro*

Elderton

Glass colour Only available on decorative styles indicated*



Black

Red

Green

Blue

Patterned/Obscure glass styles Available on non-decorative styles only



Minster™ Level 2

Chantilly™ Level 3

Digital™ Level 3

Contora™ Level 4

Stippolyte™ Level 4

Pelerine™ Level 4